

Roberts Family Move Plan

Phone: (919) 338-8178

Mobile: (919) 923-1757

Day 1: Tuesday, June 27, 2006

Starting at 9:30AM, moving storage unit in Durham (see maps for location) to home in Mebane (see maps for location). Depending on how long this takes and amount of help we have, we may begin moving apartment in Chapel Hill (see map for directions) to home in Mebane

Day 2: Wednesday, June 28, 2006

Starting at 8:00AM, moving apartment in Chapel Hill to home in Mebane.

Notes:

1. Because of size of truck (16'), move will require at least two trips to Mebane to unload.

Directions & Maps:

1. Apartment in Chapel Hill is located about 3-5 miles south of I-40, exit 266 (route 86 or Martin Luther King Blvd or Historic Airport Rd). See Chapel Hill maps #1, #2, and #3 for more details.
2. Storage unit in Durham is located near the southeast intersection of the Durham Expressway (route 147) and I-501. This is also close to the I-85 interchange for I-501. See Durham maps #1, #2, and #3 for more details.
3. Home in Mebane is located within 1 mile of I-40 using exit 153 (route 119). Mebane is located in between Chapel Hill and Burlington. See Mebane map which provides detailed directions when traveling via I-40.



Durham
Public Storage
Unit C2017
Gate Code = 117759*
MAP #3

Public Storage
(919) 384-9832
Entry Gate

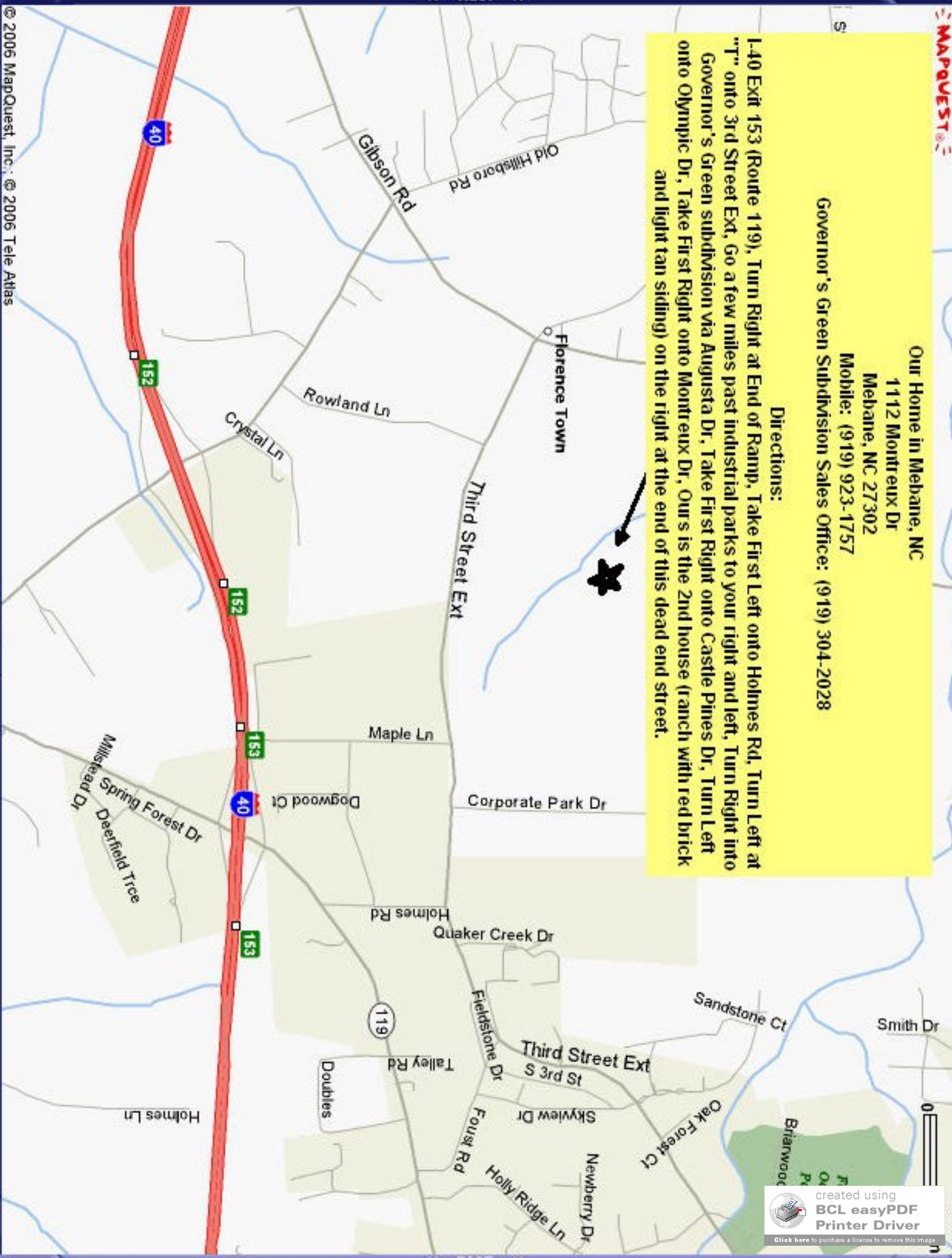
Location of
Storage Unit
Unit C2017

Kangaroo Dr

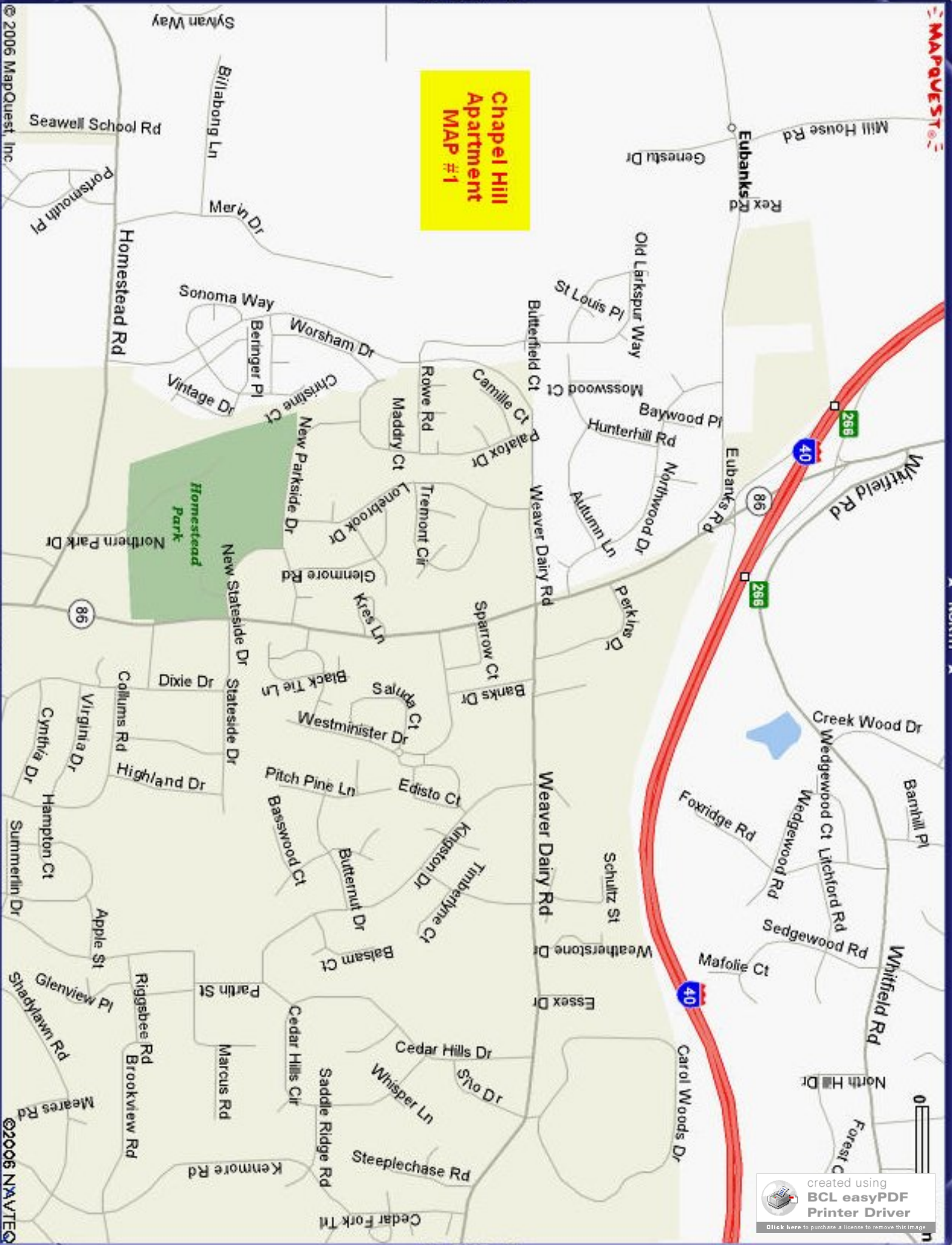
Our Home in Mebane, NC
 1112 Montreux Dr
 Mebane, NC 27302
 Mobile: (919) 923-1757
 Governor's Green Subdivision Sales Office: (919) 304-2028

Directions:

L-40 Exit 153 (Route 119), Turn Right at End of Ramp, Take First Left onto Holmes Rd, Turn Left at "T" onto 3rd Street Ext. Go a few miles past industrial parks to your right and left, Turn Right into Governor's Green subdivision via Augusta Dr, Take First Right onto Castle Pines Dr, Turn Left onto Olympic Dr, Take First Right onto Montreux Dr, Our's is the 2nd house (ranch with red brick and light tan siding) on the right at the end of this dead end street.



Chapel Hill Apartment
MAP #1



SOUTH

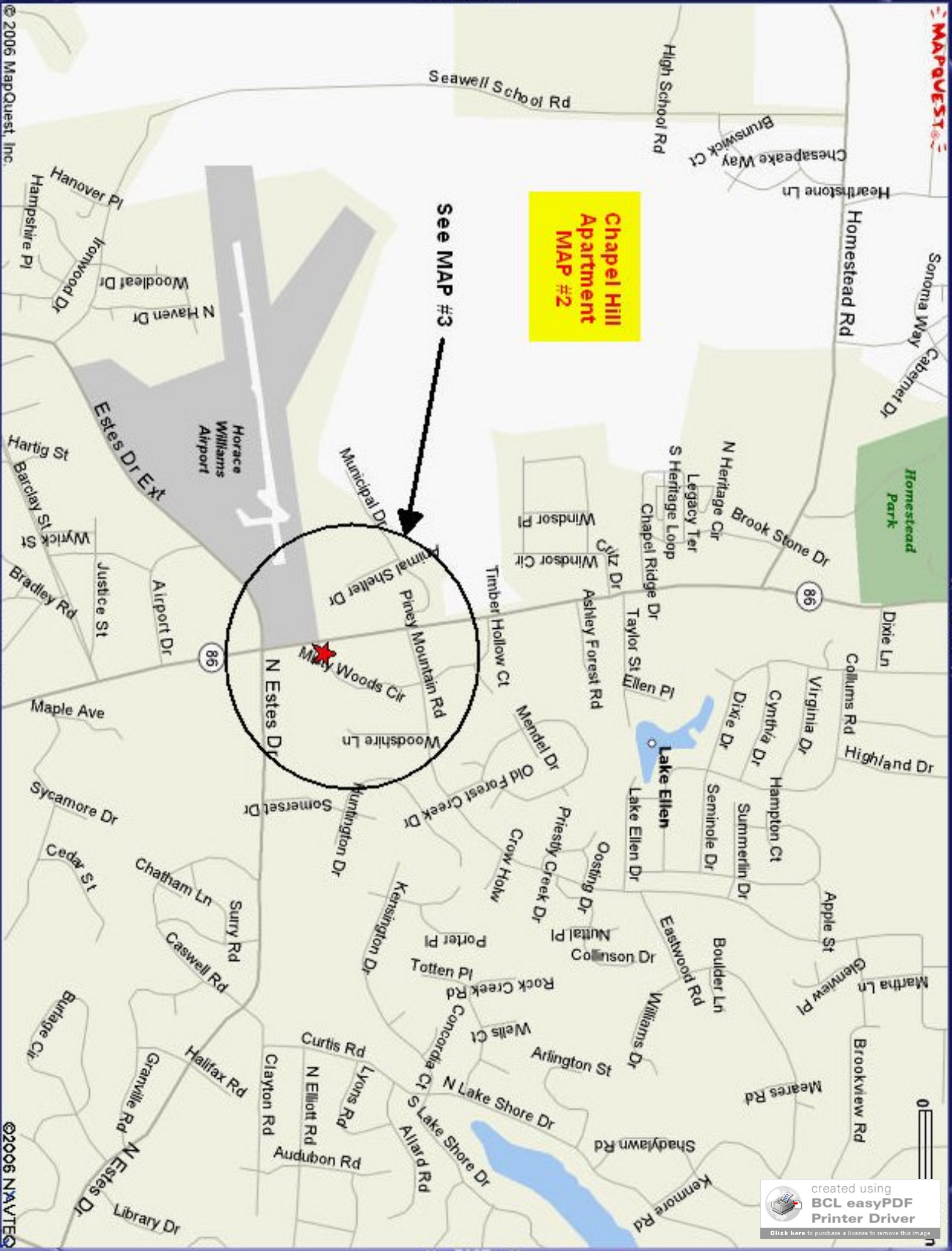
NORTH

EAST

created using
BCL easyPDF
Printer Driver
[Click here to purchase a license to remove this image](#)

Chapel Hill Apartment
MAP #2

See MAP #3



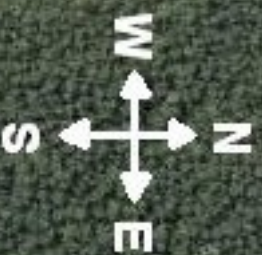
**Chapel Hill
Apartment
MAP #3**



86

86

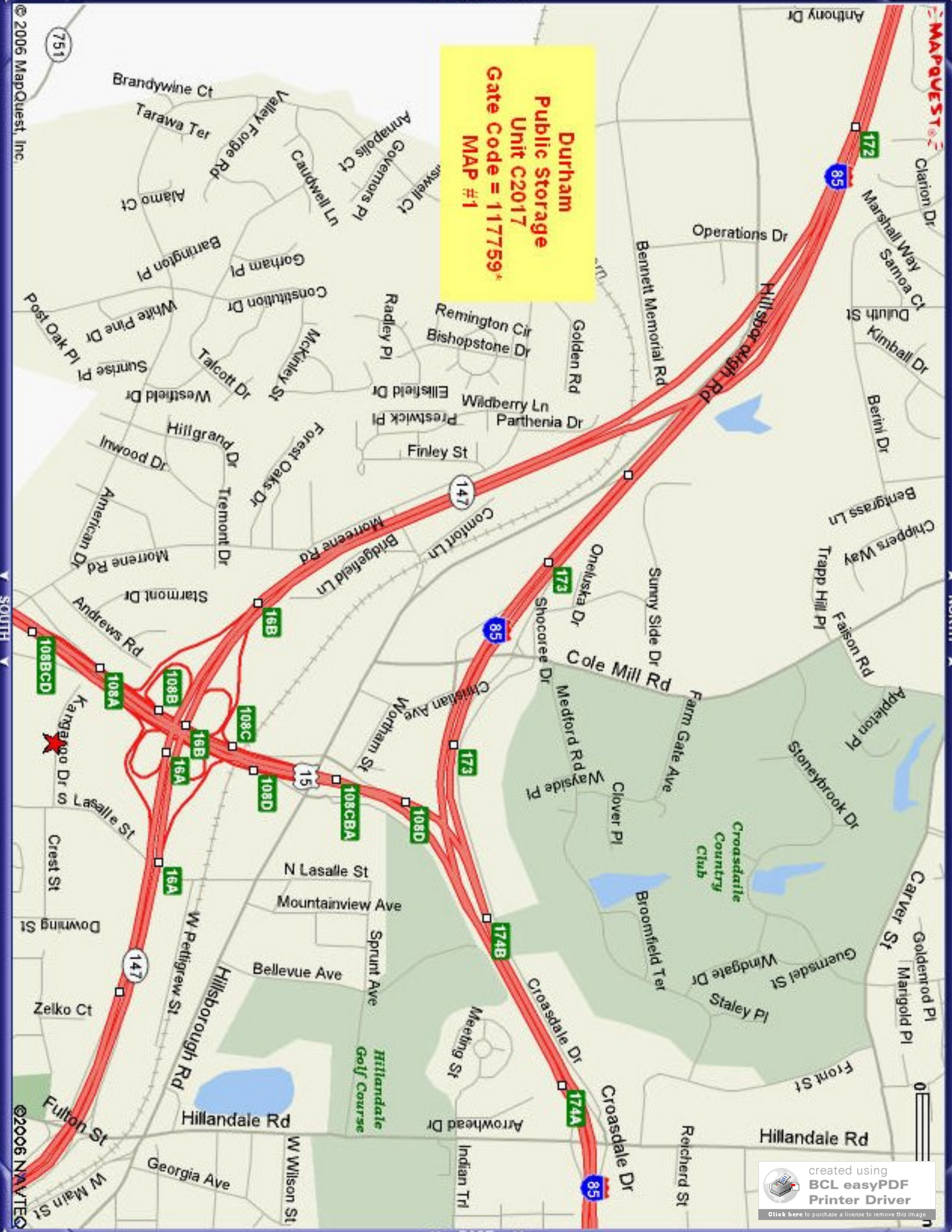
N Estes Dr



**Bldg 106
Apt M
1st Floor
On SE Corner**

**OUR
Parking
Lot**

Durham
Public Storage
Unit C2017
Gate Code = 117759*
MAP #1



Durham
Public Storage
Unit C2017
Gate Code = 117759*
MAP #2

See MAP #3

